



LAND USE AND PARKS COMMITTEE MEETING

Tuesday, March 8, 2022, 10:00 a.m.

City Hall, Council Chambers
116 First Street, Neptune Beach, FL 32266

Agenda

1. Call to Order
2. Old Business
 - a. Duval Tree Mitigation Fund Tree Planting
 - Jarboe Park Update
 - Neighborhood Planting Update
 - b. Recreational Trails Program Grant Update
3. New Business
 - a. Court Rules and Public Play Options Discussion
 - b. Park Rules and Staff Ordinance Recommendation
 - c. Parks Staffing/Maintenance Discussion
 - Parks
 - Beach Access Points
 - Wayfinding Signage
 - d. Florida Inland Navigation District Grant Opportunity
4. Public Comments
5. Adjourn

Council Members in attendance at the Committee Meeting may include:

Chair -Councilor Josh Messinger

Mayor Elaine Brown

Councilor Kerry Chin

Councilor Lauren Key

Councilor Nia Livingston

Please register for **Land Use & Parks Committee Meeting** on **March 8, 2022 10:00 AM EST** at:

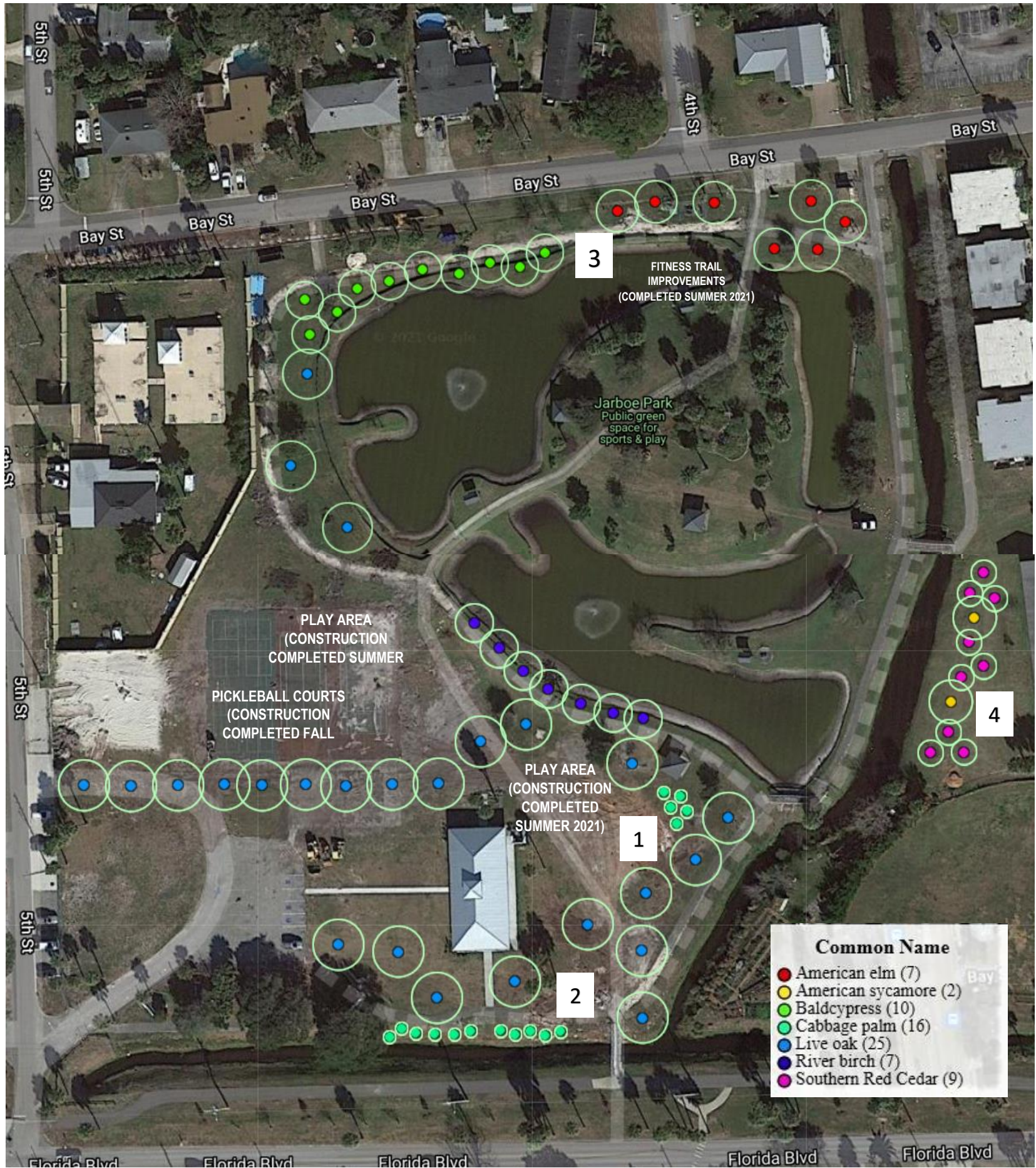
<https://attendee.gotowebinar.com/register/8741094772093236493>

Residents attending public meetings can use the code **AE93** to validate their parking session at no cost. After 9:30 a.m. on the date of the meeting, follow these steps:

Make sure you are parked in a North Beaches public parking space – we can't validate valet parking or parking in private lots.

- To use a kiosk: Using a nearby kiosk, press the Start button and then select 2 to enter your plate and the validation code.
- To use the Flowbird app: Tap the nearest yellow balloon and tap "Park here." From the payment screen, select "Redeem a code" at the top. Confirm your information and tap "Purchase" – the price will show "Free."

JARBOE PARK – LEVEL 2 TREE PLANTING NEPTUNE BEACH, FLORIDA



*NOT TO SCALE; PLEASE VISIT <https://pg-cloud.com/JacksonvilleFL/?scenario=JARBOE> FOR MORE DETAIL.





FLORIDA DEPARTMENT OF Environmental Protection

Marjory Stoneman Douglas Building
3900 Commonwealth Boulevard
Tallahassee, FL 32399

Ron DeSantis
Governor

Jeanette Nuñez
Lt. Governor

Shawn Hamilton
Secretary

February 9, 2022

Colin Moore
Grant and Resiliency Coordinator
City of Neptune Beach
116 First Street
Neptune Beach, FL 32266

Re: Jarboe Park Phase II
Recreational Trails Program Project Number T18012

Dear Mr. Moore,

Congratulations! Your Recreational Trails Program (RTP) project is now complete. The Division of State Lands hopes that the residents and visitors of the City of Neptune Beach enjoy the Jarboe Park Phase II project for many years.

The RTP compliance requirements will assist you in ensuring that visitors will always be able to enjoy these trail amenities. Please take a moment to review the terms of the project agreement as it pertains to the project's maintenance and management. As a reminder, the project agreement and limitation of use are the legal documents associated with the grant program's compliance. Retain all grant related documents, particularly those pertaining to compliance, in safe and accessible location.

Please note that the submission of the Single Audit reporting package must be submitted using the Federal Clearinghouse's Internet Data Entry System. Access the system online at <https://harvester.census.gov/facweb/>.

Again, the Division of State Lands is pleased that you have completed this recreational trail project. I look forward to working with you on future RTP grants. If you have questions or need additional information, please contact me at (850) 245-2065 or Tara.V.Reynolds@FloridaDEP.gov.

Sincerely,

A handwritten signature in blue ink, appearing to read "Tara Reynolds".

Tara Reynolds
Recreational Trails Program Administrator
Division of State Lands

Court Rules

- Tennis and Pickleball Play Only
- Court Shoes Required
- No Bikes, Scooters, Skateboards, or Skates
- No Animals
- No Chairs or Seats of Any Kind
- No Food or Drinks other than Water
- Except for City Permitted Events, Courts are Open 7:00am to 9:00pm for Drop-In Play
- Limit Play to 60 Minutes if Others are Waiting
- Play at Your Own Risk

Feedback or Suggestions? Please take our Survey:

surveymonkey.com/r/JWK6YBH



CITY OF
Neptune Beach
FLORIDA



Park Rules

- Park Hours: 5:00am to 11:00pm
- Organized Group Activities by Permit Only
- Management Reserves the Right to Close Park Facilities to the Public
- Possession and Consumption of Alcoholic Beverages Prohibited
- Smoking devices and Tobacco Products Prohibited
- Animals Must be on a Leash
- Dispose of Animal Waste Properly
- No Dumping or Littering
- Glass Containers Prohibited
- No Soliciting or Vending without Appropriate Licenses and Permits
- Motorized Vehicles Prohibited
- Do Not Disturb Wildlife or Vegetation
- Law Enforcement Officials Have Authority to Enforce Park Rules and Issue Trespass Warnings

Florida Inland Navigation District Cooperative Assistance Program

The Cooperative Assistance Program is a grant program established by the Florida Legislature and the District for the purpose of financially cooperating with federal, state and regional governments to alleviate problems associated with the Atlantic Intracoastal Waterway and associated waterways within the District.

Waterway related projects must be located on natural, navigable waterways within the District. Eligible waterway related projects include the following:

- Public fishing & viewing piers
- Public waterfront parks and boardwalks and associated improvements

There is no limitation on the amount funding that may be requested.

- Eligible for up to 50% funding assistance.
- Annually the District allocates approximately \$1 million-\$4 million for the program.
- Cash and other grant funds may be utilized as the local match.
- Grant application package will be available on the District's website in January.
- Applications are due at the District office toward the end of March.
- Funding is awarded in October.

04: THE VISION - OPEN SPACES & RECREATION

Seagate Ave Marsh Walk Proposal



Figure 4.41: Seagate Avenue Bridge Connection



Figure 4.42: Seagate Avenue- Existing Condition



SEAGATE AVENUE PROPOSED MARSHWALK CONNECTION

The proposed Seagate Avenue pedestrian bridge creates a convenient connection between neighborhoods. The bridge allows the walkers and bikers to pass over the marsh areas with minimal impact. The bridge offers another way to connect the residents with the unique ecological environment. There are also opportunities to integrate educational signage along the way.

FEATURES:

1. Educational signage
2. Pedestrian bridge connection
3. Wayfinding signage